



WAMPO Region Demographic and Socioeconomic Report

April 2023

In Partnership With:





There are an extensive number of demographic and socioeconomic variables available for the WAMPO region. To make the information more accessible and valuable to regional stakeholders, this report will provide a highlighted summary of the aggregated region and then showcase the data in infographics and tables. The following is an outline of the report structure:

- Tapestry Segmentation – The segmentation classifies households into fourteen categories predesignated to specific consumer preferences and lifestyles. The tapestries are built from consumer spending and socioeconomic data and help characterize the communities into distinct groups of behaviors. Specific descriptions of these grouping can be downloaded using the following link;

<https://doc.arcgis.com/en/esri-demographics/latest/regional-data/tapestry-segmentation.htm#GUID-423D9E4C-1C73-4039-82A9-29713A9D9DB9>

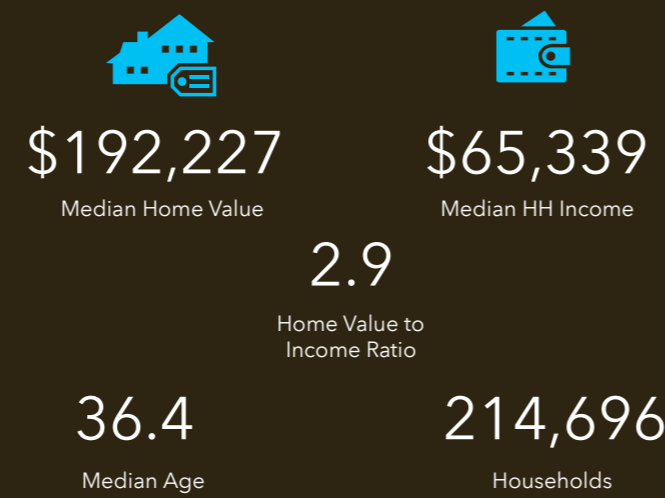
- Dominant Tapestry Map - This overlays the various tapestry segmentations by Census Tract, demonstrating the diversity across the region.
- Diversity Index Map - This segments the Census Tracts and assigns each a diversity index for the population within the area.
- Demographic and income comparison profile – The profiles contain demographics of each region, breaking out sections of the population by income, age, sex, and race.
- Age by sex by race profile – The report combines the variables of age, sex, and race to provide a more specific cross-section of the region's constituents.



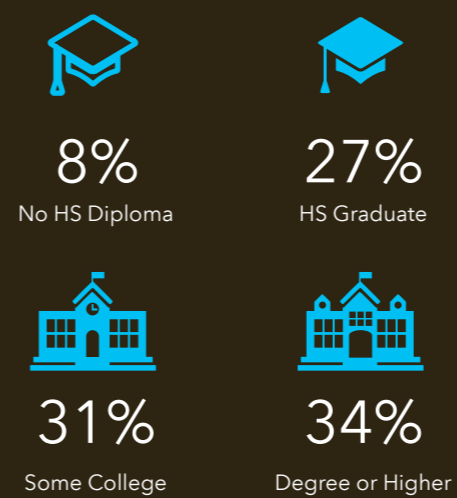
TAPESTRY SEGMENTATION

The Fabric of America's Neighborhoods

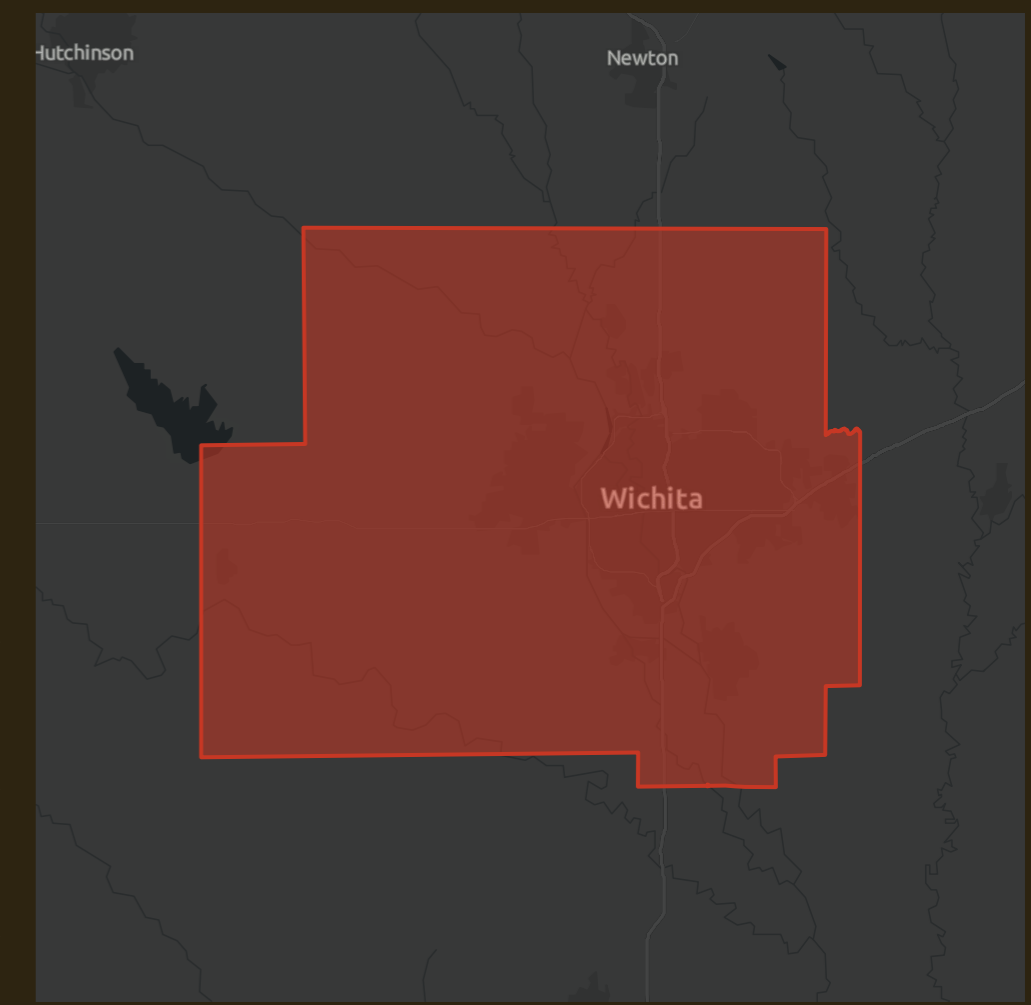
Key Facts



Education

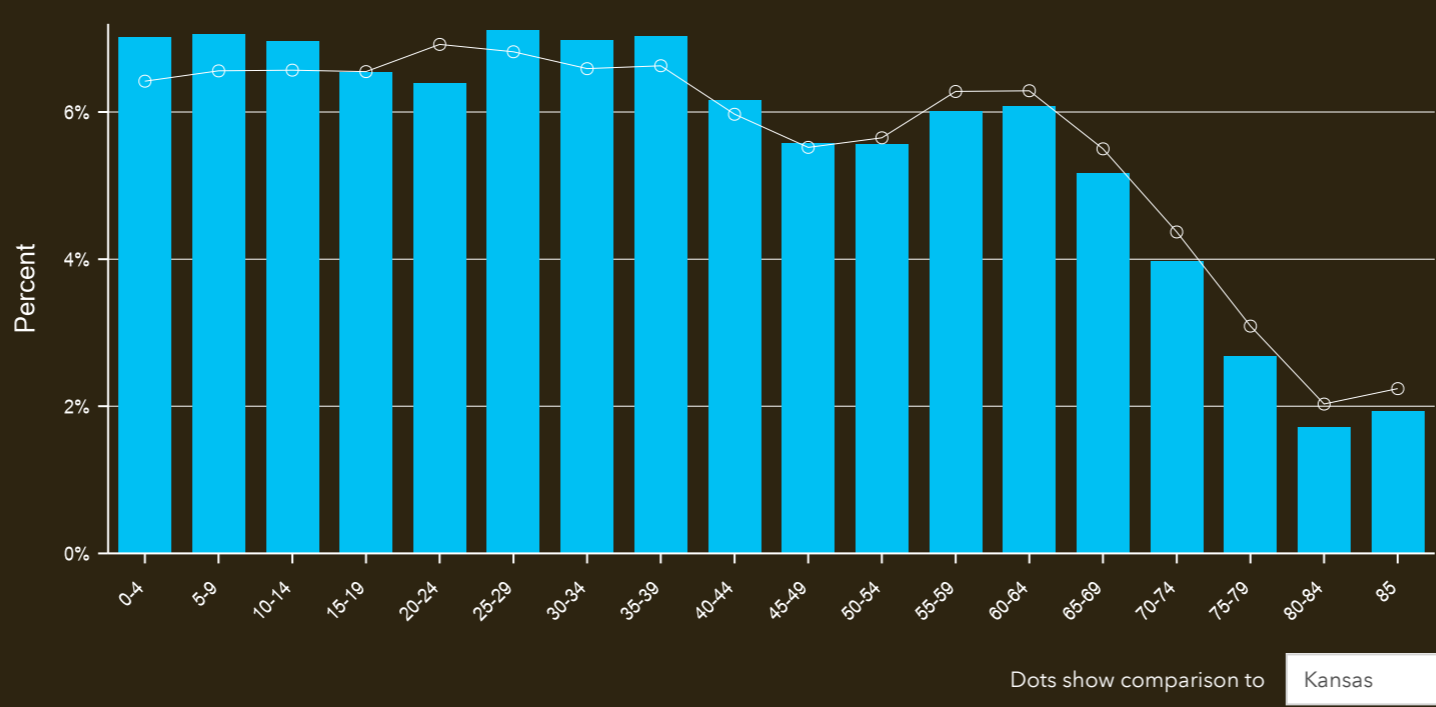


WAMPO Region
 Area: 1,053.11 square miles



Tapestry LifeMode	Households	HHs %	% US HHs	Index
learn more...				
Affluent Estates (L1)	18,480	8.61%	10.00%	86
Upscale Avenues (L2)	0	0.00%	5.55%	0
Uptown Individuals (L3)	0	0.00%	3.58%	0
Family Landscapes (L4)	37,391	17.42%	7.63%	228
GenXurban (L5)	33,581	15.64%	11.26%	139
Cozy Country Living (L6)	23,865	11.12%	12.06%	92
Sprouting Explorers (L7)	11,016	5.13%	7.20%	71
Middle Ground (L8)	25,644	11.94%	10.79%	111
Senior Styles (L9)	5,810	2.71%	5.80%	47
Rustic Outposts (L10)	4,321	2.01%	8.30%	24
Midtown Singles (L11)	24,859	11.58%	6.16%	188
Hometown (L12)	25,291	11.78%	6.01%	196
Next Wave (L13)	3,702	1.72%	3.78%	46
Scholars and Patriots (L14)	737	0.34%	1.61%	21

Age Profile



Households By Income
 The largest group: \$50,000 - \$74,999 (20.2%)
 The smallest group: \$200,000+ (5.7%)

Indicator ▲	Value	Diff
<\$15,000	8.5%	+0.5%
\$15,000 - \$24,999	7.0%	+0.1%
\$25,000 - \$34,999	7.7%	+0.2%
\$35,000 - \$49,999	12.6%	+0.5%
\$50,000 - \$74,999	20.2%	+1.1%
\$75,000 - \$99,999	13.4%	-1.1%
\$100,000 - \$149,999	18.3%	+0.7%
\$150,000 - \$199,999	6.5%	-0.6%
\$200,000+	5.7%	-1.3%

Bars show deviation from **Kansas**

Tapestry Segments

4A	Workday Drive 18,943 households	8.8% of Households
12B	Traditional Living 18,444 households	8.6% of Households
6A	Green Acres 16,243 households	7.6% of Households

Source: Esri. The vintage of the data is 2022.

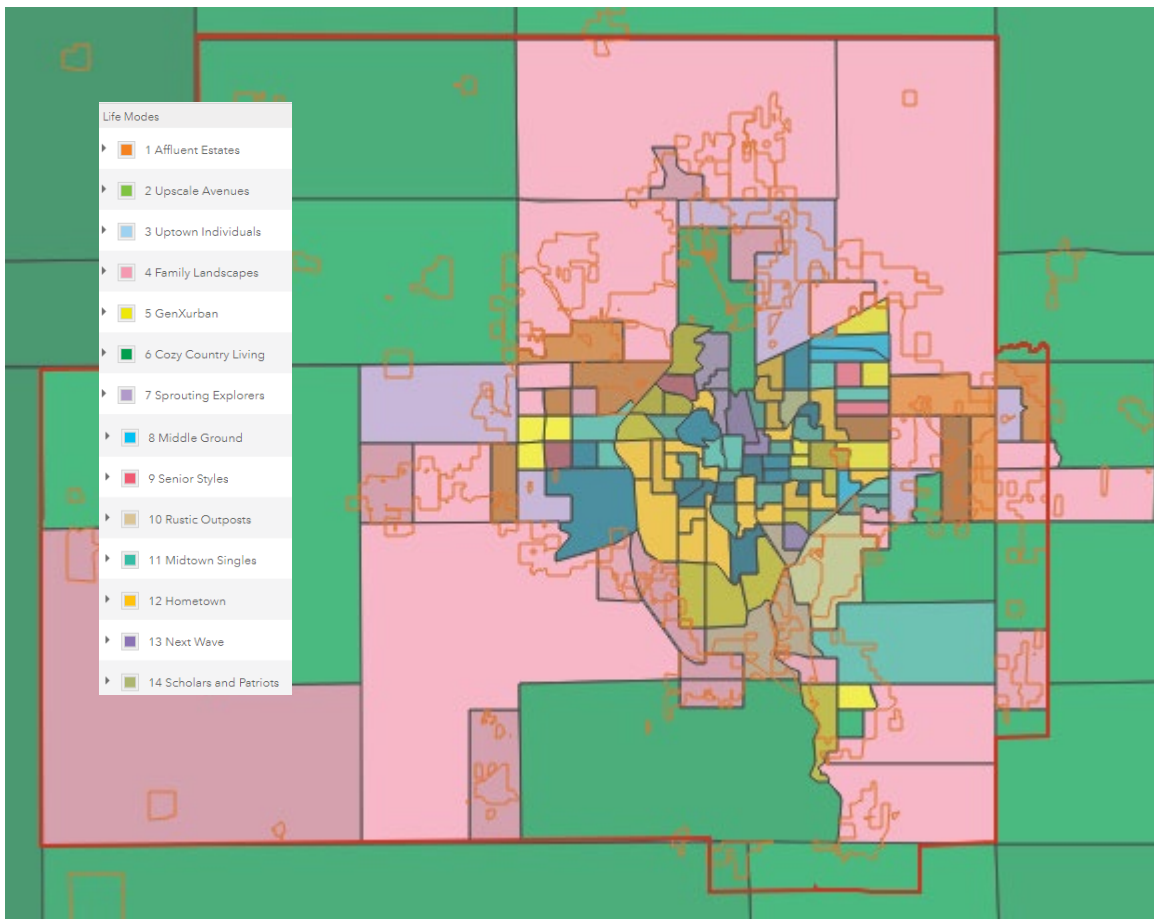


Dominant Tapestry Map

The Tapestry Segmentation is a tool developed by ESRI, a leading Geographic Information System (GIS) software company, to classify and analyze US residential areas based on demographic and lifestyle characteristics.

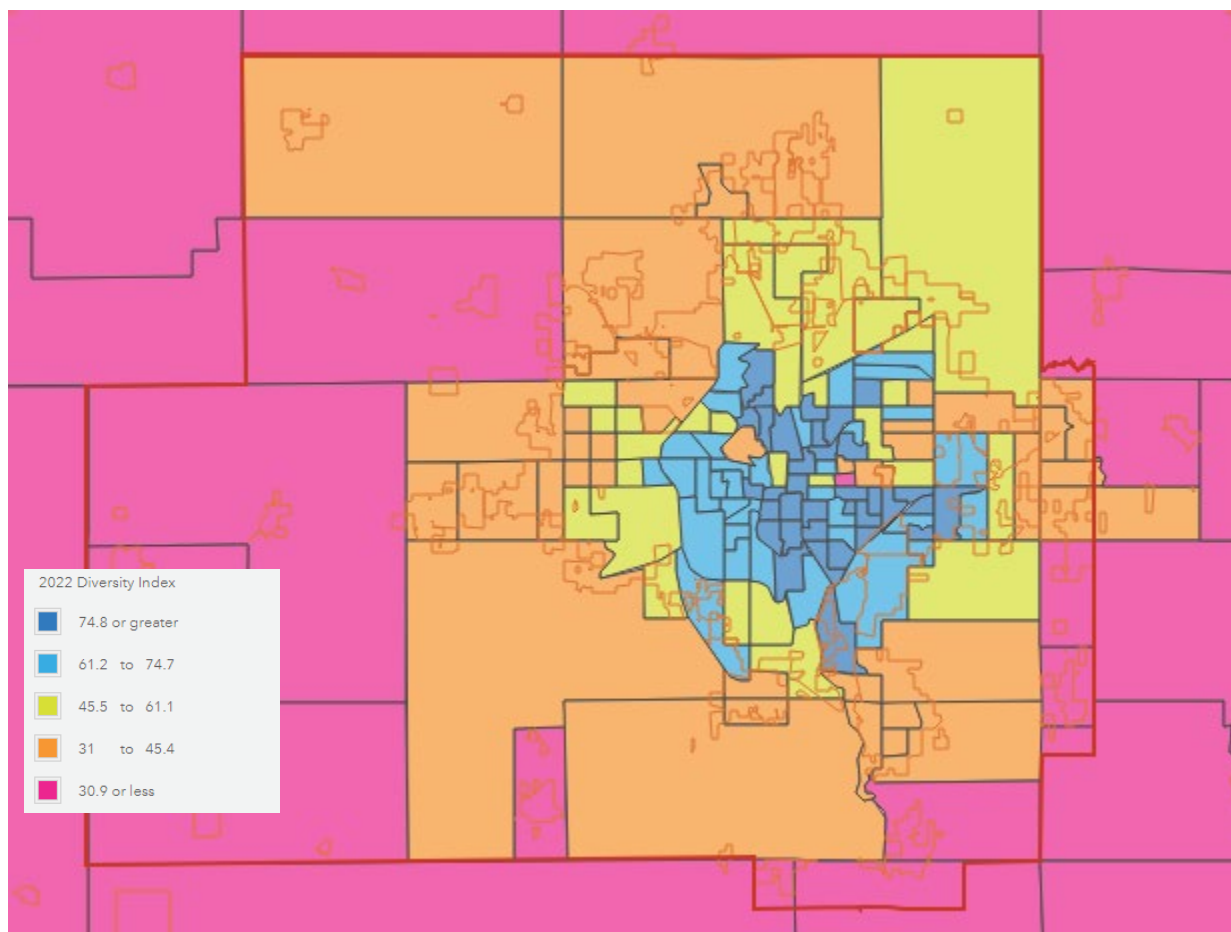
The segmentation groups similar neighborhoods together based on over 100 demographic variables such as age, income, education, and employment, as well as lifestyle attributes such as leisure activities, shopping habits, and media preferences. By using Tapestry Segmentation, organizations can gain insights into local populations' needs, preferences, and behaviors.

The dominant tapestries within the WAMPO region were Family Landscapes and Cozy Country Living. Family Landscapes households are successful young families in their first homes, own SUVs, eat out frequently, and are engaged in activities like bowling, golf, and video games. In contrast, Cozy Country Living households are empty nesters living in single-family dwellings, own lots of tools for their lawns and gardens, and listen to country music. The closer to the city center, the larger the lifestyle diversity. Even more proximal suburbs, such as Maize and Derby, exhibit different tapestry segments.



Diversity Index Map

Regional racial and ethnic diversity is essential to consider in transportation planning. Diverse communities attract a wider range of businesses, increase innovation, and improve health outcomes. The following diversity index is based on a scale of 100, with 100 being the most diverse. The map displays the diversity by Census Tract and shows that suburban areas are less diverse than the city center. However, the enclave of Eastborough demonstrates a low diversity index compared to its surrounding areas.



Census 2010 Summary	
Population	518,170
Households	200,409
Families	132,217
Average Household Size	2.55
Owner Occupied Housing Units	132,095
Renter Occupied Housing Units	68,314
Median Age	34.3
Census 2020 Summary	
Population	546,056
Households	212,916
Average Household Size	2.51
2022 Summary	
Population	549,710
Households	214,696
Families	137,304
Average Household Size	2.51
Owner Occupied Housing Units	139,974
Renter Occupied Housing Units	74,722
Median Age	36.4
Median Household Income	\$65,339
Average Household Income	\$89,895
2027 Summary	
Population	552,622
Households	216,349
Families	138,278
Average Household Size	2.50
Owner Occupied Housing Units	142,994
Renter Occupied Housing Units	73,355
Median Age	37.0
Median Household Income	\$76,912
Average Household Income	\$104,693
Trends: 2022-2027 Annual Rate	
Population	0.11%
Households	0.15%
Families	0.14%
Owner Households	0.43%
Median Household Income	3.32%

2022 Households by Income	Number	Percent
<\$15,000	18,341	8.5%
\$15,000 - \$24,999	14,949	7.0%
\$25,000 - \$34,999	16,583	7.7%
\$35,000 - \$49,999	27,050	12.6%
\$50,000 - \$74,999	43,379	20.2%
\$75,000 - \$99,999	28,796	13.4%
\$100,000 - \$149,999	39,289	18.3%
\$150,000 - \$199,999	14,028	6.5%
\$200,000+	12,280	5.7%
Median Household Income	\$65,339	
Average Household Income	\$89,895	
Per Capita Income	\$35,221	

2027 Households by Income	Number	Percent
<\$15,000	14,371	6.6%
\$15,000 - \$24,999	10,897	5.0%
\$25,000 - \$34,999	13,019	6.0%
\$35,000 - \$49,999	24,512	11.3%
\$50,000 - \$74,999	42,252	19.5%
\$75,000 - \$99,999	30,907	14.3%
\$100,000 - \$149,999	46,133	21.3%
\$150,000 - \$199,999	19,042	8.8%
\$200,000+	15,217	7.0%
Median Household Income	\$76,912	
Average Household Income	\$104,693	
Per Capita Income	\$41,098	

Data Note: Income is expressed in current dollars.

Source: Esri forecasts for 2022 and 2027. U.S. Census Bureau 2010 decennial Census data converted by Esri into 2020 geography.

2010 Population by Age	Number	Percent
Age 0 - 4	40,679	7.9%
Age 5 - 9	39,392	7.6%
Age 10 - 14	38,417	7.4%
Age 15 - 19	36,824	7.1%
Age 20 - 24	35,749	6.9%
Age 25 - 34	72,565	14.0%
Age 35 - 44	64,512	12.4%
Age 45 - 54	73,504	14.2%
Age 55 - 64	57,528	11.1%
Age 65 - 74	30,217	5.8%
Age 75 - 84	20,042	3.9%
Age 85+	8,744	1.7%

2022 Population by Age	Number	Percent
Age 0 - 4	38,576	7.0%
Age 5 - 9	38,817	7.1%
Age 10 - 14	38,286	7.0%
Age 15 - 19	35,936	6.5%
Age 20 - 24	35,180	6.4%
Age 25 - 34	77,482	14.1%
Age 35 - 44	72,635	13.2%
Age 45 - 54	61,247	11.1%
Age 55 - 64	66,466	12.1%
Age 65 - 74	50,246	9.1%
Age 75 - 84	24,221	4.4%
Age 85+	10,618	1.9%

2027 Population by Age	Number	Percent
Age 0 - 4	38,932	7.0%
Age 5 - 9	38,606	7.0%
Age 10 - 14	38,634	7.0%
Age 15 - 19	35,921	6.5%
Age 20 - 24	34,470	6.2%
Age 25 - 34	74,467	13.5%
Age 35 - 44	75,469	13.7%
Age 45 - 54	61,872	11.2%
Age 55 - 64	58,492	10.6%
Age 65 - 74	54,862	9.9%
Age 75 - 84	29,962	5.4%
Age 85+	10,936	2.0%

Source: Esri forecasts for 2022 and 2027. U.S. Census Bureau 2010 decennial Census data converted by Esri into 2020 geography.

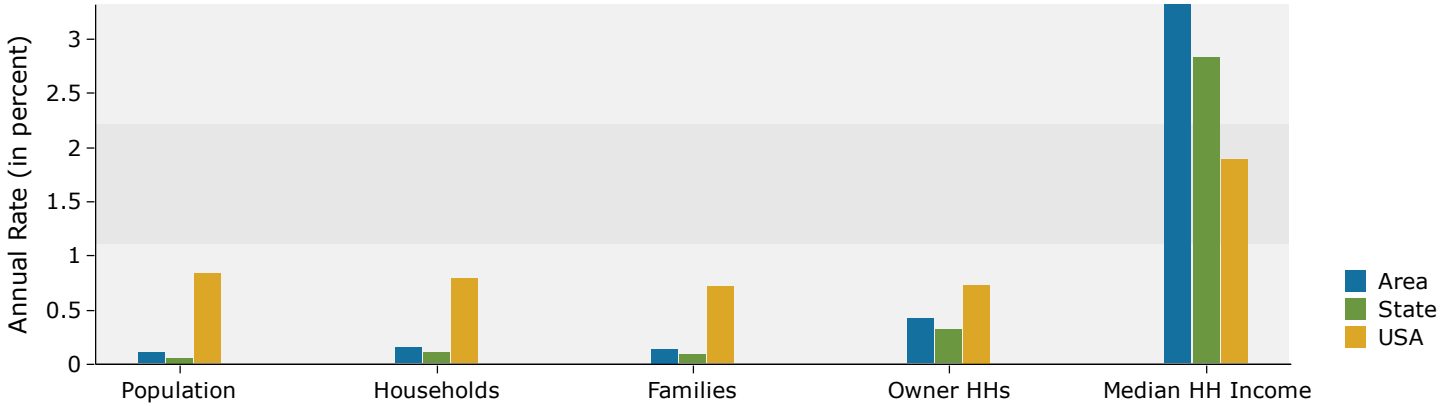
2010 Race and Ethnicity	Number	Percent
White Alone	399,089	77.0%
Black Alone	46,325	8.9%
American Indian Alone	5,874	1.1%
Asian Alone	20,649	4.0%
Pacific Islander Alone	421	0.1%
Some Other Race Alone	25,469	4.9%
Two or More Races	20,343	3.9%
Hispanic Origin (Any Race)	65,437	12.6%

2020 Race and Ethnicity	Number	Percent
White Alone	376,415	68.9%
Black Alone	46,943	8.6%
American Indian Alone	6,738	1.2%
Asian Alone	23,212	4.3%
Pacific Islander Alone	591	0.1%
Some Other Race Alone	32,546	6.0%
Two or More Races	59,611	10.9%
Hispanic Origin (Any Race)	83,987	15.4%

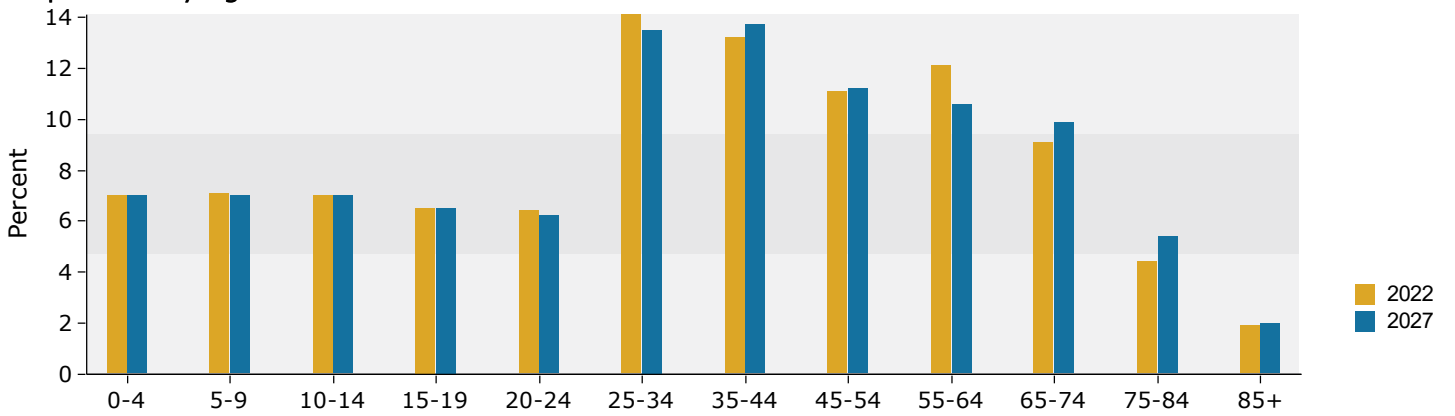
2022 Race and Ethnicity	Number	Percent
White Alone	376,744	68.5%
Black Alone	47,094	8.6%
American Indian Alone	6,797	1.2%
Asian Alone	23,447	4.3%
Pacific Islander Alone	594	0.1%
Some Other Race Alone	33,243	6.0%
Two or More Races	61,791	11.2%
Hispanic Origin (Any Race)	85,270	15.5%

2027 Race and Ethnicity	Number	Percent
White Alone	371,353	67.2%
Black Alone	46,920	8.5%
American Indian Alone	6,950	1.3%
Asian Alone	23,861	4.3%
Pacific Islander Alone	611	0.1%
Some Other Race Alone	34,841	6.3%
Two or More Races	68,085	12.3%
Hispanic Origin (Any Race)	86,974	15.7%

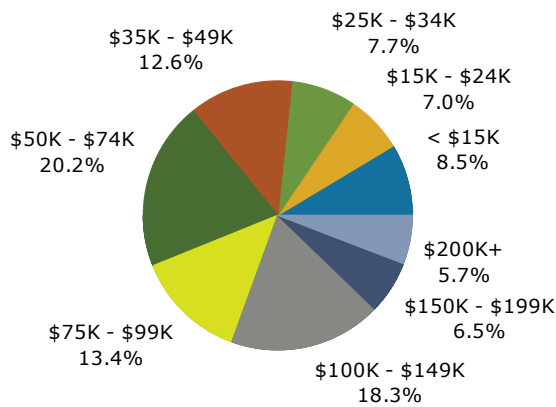
Trends 2022-2027



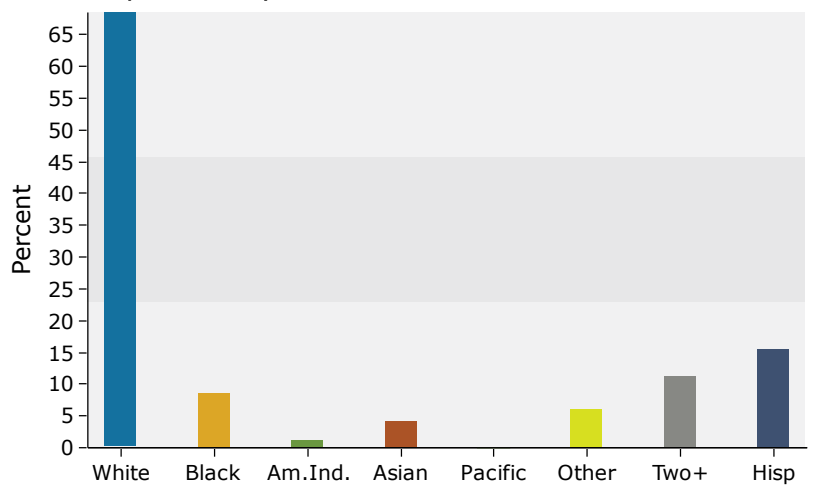
Population by Age



2022 Household Income



2022 Population by Race



Source: Esri forecasts for 2022 and 2027. U.S. Census Bureau 2010 decennial Census data converted by Esri into 2020 geography.

Age by Sex by Race Profile

WAMPO Region
 Area: 1,053.11 square miles

Prepared by Esri

Summary	Census 2010	2022	2027	2022-2027 Change	2022-2027 Annual Rate
Population	518,170	549,710	552,622	2,912	0.11%
Households	200,409	214,696	216,349	1,653	0.15%
Median Age	34.3	36.4	37.0	0.6	0.33%
Median Male Age	33.5	35.6	36.2	0.6	0.33%
Median Female Age	35.2	37.1	37.8	0.7	0.37%

2022 Hispanic Population by Age

	Total		Males		Females	
	Number	Percent	Number	Percent	Number	Percent
Total	85,267	100.0%	43,297	100.0%	41,970	100.0%
0 - 4	10,558	12.4%	5,194	12.0%	5,364	12.8%
5 - 9	10,098	11.8%	5,088	11.8%	5,010	11.9%
10 - 14	9,161	10.7%	4,602	10.6%	4,559	10.9%
15 - 19	7,644	9.0%	3,924	9.1%	3,720	8.9%
20 - 24	6,581	7.7%	3,373	7.8%	3,208	7.6%
25 - 29	6,921	8.1%	3,640	8.4%	3,281	7.8%
30 - 34	7,169	8.4%	3,698	8.5%	3,471	8.3%
35 - 39	6,894	8.1%	3,519	8.1%	3,375	8.0%
40 - 44	5,168	6.1%	2,699	6.2%	2,469	5.9%
45 - 49	3,462	4.1%	1,800	4.2%	1,662	4.0%
50 - 54	2,785	3.3%	1,431	3.3%	1,355	3.2%
55 - 59	2,335	2.7%	1,201	2.8%	1,134	2.7%
60 - 64	2,042	2.4%	1,014	2.3%	1,027	2.4%
65 - 69	1,690	2.0%	874	2.0%	816	1.9%
70 - 74	1,137	1.3%	539	1.2%	598	1.4%
75 - 79	739	0.9%	335	0.8%	404	1.0%
80 - 84	433	0.5%	186	0.4%	247	0.6%
85+	450	0.5%	180	0.4%	270	0.6%
Median Age	23.9		24.2		23.6	

2027 Hispanic Population by Age

	Total		Males		Females	
	Number	Percent	Number	Percent	Number	Percent
Total	86,974	100.0%	44,172	100.0%	42,802	100.0%
0 - 4	10,885	12.5%	5,379	12.2%	5,505	12.9%
5 - 9	10,260	11.8%	5,171	11.7%	5,089	11.9%
10 - 14	9,398	10.8%	4,740	10.7%	4,658	10.9%
15 - 19	7,929	9.1%	4,066	9.2%	3,862	9.0%
20 - 24	6,796	7.8%	3,473	7.9%	3,324	7.8%
25 - 29	6,666	7.7%	3,503	7.9%	3,163	7.4%
30 - 34	6,877	7.9%	3,526	8.0%	3,351	7.8%
35 - 39	6,828	7.9%	3,535	8.0%	3,293	7.7%
40 - 44	5,733	6.6%	2,937	6.6%	2,796	6.5%
45 - 49	3,796	4.4%	1,964	4.4%	1,832	4.3%
50 - 54	2,702	3.1%	1,396	3.2%	1,307	3.1%
55 - 59	2,148	2.5%	1,124	2.5%	1,024	2.4%
60 - 64	1,914	2.2%	941	2.1%	972	2.3%
65 - 69	1,806	2.1%	949	2.1%	857	2.0%
70 - 74	1,291	1.5%	603	1.4%	688	1.6%
75 - 79	900	1.0%	413	0.9%	487	1.1%
80 - 84	559	0.6%	253	0.6%	306	0.7%
85+	487	0.6%	200	0.5%	287	0.7%
Median Age	23.7		23.9		23.4	

Source: Esri forecasts for 2022 and 2027. U.S. Census Bureau 2010 decennial Census data converted by Esri into 2020 geography.

Age by Sex by Race Profile

WAMPO Region
 Area: 1,053.11 square miles

Prepared by Esri

2022 White Population by Age

	Total		Males		Females	
	Number	Percent	Number	Percent	Number	Percent
Total	376,742	100.0%	185,861	100.0%	190,885	100.0%
0 - 4	20,202	5.4%	10,315	5.5%	9,888	5.2%
5 - 9	21,024	5.6%	10,885	5.9%	10,140	5.3%
10 - 14	21,338	5.7%	10,781	5.8%	10,557	5.5%
15 - 19	21,647	5.7%	11,006	5.9%	10,641	5.6%
20 - 24	22,661	6.0%	11,303	6.1%	11,358	6.0%
25 - 29	26,070	6.9%	13,217	7.1%	12,853	6.7%
30 - 34	25,494	6.8%	12,919	7.0%	12,575	6.6%
35 - 39	26,076	6.9%	12,999	7.0%	13,077	6.9%
40 - 44	23,509	6.2%	11,907	6.4%	11,602	6.1%
45 - 49	22,439	6.0%	11,306	6.1%	11,134	5.8%
50 - 54	23,063	6.1%	11,591	6.2%	11,472	6.0%
55 - 59	26,140	6.9%	12,926	7.0%	13,214	6.9%
60 - 64	27,074	7.2%	13,175	7.1%	13,899	7.3%
65 - 69	22,933	6.1%	10,988	5.9%	11,945	6.3%
70 - 74	17,685	4.7%	8,401	4.5%	9,283	4.9%
75 - 79	12,170	3.2%	5,445	2.9%	6,726	3.5%
80 - 84	8,001	2.1%	3,356	1.8%	4,646	2.4%
85+	9,216	2.4%	3,341	1.8%	5,875	3.1%
Median Age	40.8		39.8		41.9	

2027 White Population by Age

	Total		Males		Females	
	Number	Percent	Number	Percent	Number	Percent
Total	371,353	100.0%	183,386	100.0%	187,967	100.0%
0 - 4	19,500	5.3%	10,018	5.5%	9,482	5.0%
5 - 9	20,128	5.4%	10,424	5.7%	9,704	5.2%
10 - 14	20,727	5.6%	10,556	5.8%	10,170	5.4%
15 - 19	20,801	5.6%	10,641	5.8%	10,160	5.4%
20 - 24	21,304	5.7%	10,527	5.7%	10,777	5.7%
25 - 29	23,200	6.2%	11,703	6.4%	11,497	6.1%
30 - 34	25,679	6.9%	13,112	7.1%	12,567	6.7%
35 - 39	25,203	6.8%	12,746	7.0%	12,457	6.6%
40 - 44	25,404	6.8%	12,817	7.0%	12,587	6.7%
45 - 49	23,711	6.4%	11,921	6.5%	11,790	6.3%
50 - 54	21,423	5.8%	10,804	5.9%	10,619	5.6%
55 - 59	22,111	6.0%	11,019	6.0%	11,092	5.9%
60 - 64	23,875	6.4%	11,685	6.4%	12,190	6.5%
65 - 69	23,989	6.5%	11,509	6.3%	12,480	6.6%
70 - 74	20,069	5.4%	9,421	5.1%	10,648	5.7%
75 - 79	15,161	4.1%	6,900	3.8%	8,260	4.4%
80 - 84	9,710	2.6%	4,160	2.3%	5,550	3.0%
85+	9,357	2.5%	3,420	1.9%	5,937	3.2%
Median Age	41.8		40.8		42.8	

Source: Esri forecasts for 2022 and 2027. U.S. Census Bureau 2010 decennial Census data converted by Esri into 2020 geography.

Age by Sex by Race Profile

WAMPO Region
 Area: 1,053.11 square miles

Prepared by Esri

2022 Black Population by Age

	Total		Males		Females	
	Number	Percent	Number	Percent	Number	Percent
Total	47,094	100.0%	23,233	100.0%	23,859	100.0%
0 - 4	3,554	7.5%	1,773	7.6%	1,781	7.5%
5 - 9	3,532	7.5%	1,801	7.8%	1,730	7.3%
10 - 14	3,620	7.7%	1,844	7.9%	1,776	7.4%
15 - 19	3,696	7.8%	1,910	8.2%	1,786	7.5%
20 - 24	3,411	7.2%	1,679	7.2%	1,732	7.3%
25 - 29	3,498	7.4%	1,783	7.7%	1,715	7.2%
30 - 34	3,579	7.6%	1,737	7.5%	1,842	7.7%
35 - 39	3,340	7.1%	1,695	7.3%	1,645	6.9%
40 - 44	3,110	6.6%	1,571	6.8%	1,538	6.4%
45 - 49	2,930	6.2%	1,462	6.3%	1,468	6.2%
50 - 54	2,760	5.9%	1,417	6.1%	1,343	5.6%
55 - 59	2,543	5.4%	1,248	5.4%	1,295	5.4%
60 - 64	2,171	4.6%	1,056	4.5%	1,115	4.7%
65 - 69	1,906	4.0%	850	3.7%	1,056	4.4%
70 - 74	1,455	3.1%	650	2.8%	805	3.4%
75 - 79	1,000	2.1%	422	1.8%	578	2.4%
80 - 84	523	1.1%	189	0.8%	334	1.4%
85+	466	1.0%	146	0.6%	320	1.3%
Median Age	33.1		32.4		33.8	

2027 Black Population by Age

	Total		Males		Females	
	Number	Percent	Number	Percent	Number	Percent
Total	46,920	100.0%	23,082	100.0%	23,838	100.0%
0 - 4	3,527	7.5%	1,766	7.7%	1,761	7.4%
5 - 9	3,400	7.2%	1,736	7.5%	1,663	7.0%
10 - 14	3,564	7.6%	1,825	7.9%	1,740	7.3%
15 - 19	3,689	7.9%	1,898	8.2%	1,792	7.5%
20 - 24	3,454	7.4%	1,691	7.3%	1,763	7.4%
25 - 29	3,326	7.1%	1,653	7.2%	1,673	7.0%
30 - 34	3,273	7.0%	1,603	6.9%	1,669	7.0%
35 - 39	3,295	7.0%	1,660	7.2%	1,635	6.9%
40 - 44	3,423	7.3%	1,717	7.4%	1,706	7.2%
45 - 49	3,194	6.8%	1,605	7.0%	1,589	6.7%
50 - 54	2,607	5.6%	1,328	5.8%	1,279	5.4%
55 - 59	2,279	4.9%	1,142	4.9%	1,137	4.8%
60 - 64	2,046	4.4%	997	4.3%	1,049	4.4%
65 - 69	1,982	4.2%	873	3.8%	1,109	4.7%
70 - 74	1,601	3.4%	723	3.1%	878	3.7%
75 - 79	1,153	2.5%	481	2.1%	672	2.8%
80 - 84	610	1.3%	226	1.0%	384	1.6%
85+	496	1.1%	157	0.7%	339	1.4%
Median Age	33.8		33.0		34.6	

Source: Esri forecasts for 2022 and 2027. U.S. Census Bureau 2010 decennial Census data converted by Esri into 2020 geography.

Age by Sex by Race Profile

WAMPO Region
 Area: 1,053.11 square miles

Prepared by Esri

2022 American Indian Population by Age

	Total		Males		Females	
	Number	Percent	Number	Percent	Number	Percent
Total	6,797	100.0%	3,262	100.0%	3,533	100.0%
0 - 4	360	5.3%	172	5.3%	187	5.3%
5 - 9	448	6.6%	218	6.7%	230	6.5%
10 - 14	499	7.3%	293	9.0%	206	5.8%
15 - 19	495	7.3%	255	7.8%	240	6.8%
20 - 24	448	6.6%	228	7.0%	221	6.3%
25 - 29	510	7.5%	245	7.5%	265	7.5%
30 - 34	525	7.7%	263	8.1%	262	7.4%
35 - 39	547	8.0%	260	8.0%	287	8.1%
40 - 44	509	7.5%	225	6.9%	284	8.0%
45 - 49	468	6.9%	222	6.8%	245	6.9%
50 - 54	400	5.9%	170	5.2%	230	6.5%
55 - 59	439	6.5%	195	6.0%	244	6.9%
60 - 64	414	6.1%	194	5.9%	220	6.2%
65 - 69	284	4.2%	119	3.6%	165	4.7%
70 - 74	224	3.3%	101	3.1%	122	3.5%
75 - 79	103	1.5%	55	1.7%	48	1.4%
80 - 84	76	1.1%	30	0.9%	46	1.3%
85+	48	0.7%	17	0.5%	31	0.9%
Median Age	36.0		34.2		37.7	

2027 American Indian Population by Age

	Total		Males		Females	
	Number	Percent	Number	Percent	Number	Percent
Total	6,950	100.0%	3,333	100.0%	3,617	100.0%
0 - 4	367	5.3%	175	5.3%	191	5.3%
5 - 9	450	6.5%	222	6.7%	228	6.3%
10 - 14	521	7.5%	307	9.2%	214	5.9%
15 - 19	492	7.1%	257	7.7%	235	6.5%
20 - 24	477	6.9%	238	7.1%	240	6.6%
25 - 29	504	7.3%	240	7.2%	264	7.3%
30 - 34	508	7.3%	258	7.7%	250	6.9%
35 - 39	548	7.9%	263	7.9%	285	7.9%
40 - 44	568	8.2%	247	7.4%	321	8.9%
45 - 49	517	7.4%	244	7.3%	273	7.5%
50 - 54	392	5.6%	173	5.2%	219	6.1%
55 - 59	403	5.8%	177	5.3%	226	6.2%
60 - 64	391	5.6%	182	5.5%	208	5.8%
65 - 69	320	4.6%	136	4.1%	184	5.1%
70 - 74	242	3.5%	110	3.3%	131	3.6%
75 - 79	110	1.6%	54	1.6%	56	1.5%
80 - 84	90	1.3%	33	1.0%	57	1.6%
85+	51	0.7%	17	0.5%	34	0.9%
Median Age	36.4		34.4		38.3	

Source: Esri forecasts for 2022 and 2027. U.S. Census Bureau 2010 decennial Census data converted by Esri into 2020 geography.

Age by Sex by Race Profile

WAMPO Region
 Area: 1,053.11 square miles

Prepared by Esri

2022 Asian Population by Age

	Total		Males		Females	
	Number	Percent	Number	Percent	Number	Percent
Total	23,446	100.0%	11,371	100.0%	12,076	100.0%
0 - 4	1,335	5.7%	703	6.2%	632	5.2%
5 - 9	1,618	6.9%	844	7.4%	774	6.4%
10 - 14	1,494	6.4%	770	6.8%	724	6.0%
15 - 19	1,425	6.1%	698	6.1%	728	6.0%
20 - 24	1,724	7.4%	924	8.1%	800	6.6%
25 - 29	2,097	8.9%	1,042	9.2%	1,055	8.7%
30 - 34	1,994	8.5%	951	8.4%	1,043	8.6%
35 - 39	2,423	10.3%	1,144	10.1%	1,279	10.6%
40 - 44	1,881	8.0%	903	7.9%	978	8.1%
45 - 49	1,293	5.5%	651	5.7%	642	5.3%
50 - 54	1,177	5.0%	545	4.8%	632	5.2%
55 - 59	1,215	5.2%	561	4.9%	654	5.4%
60 - 64	1,252	5.3%	547	4.8%	705	5.8%
65 - 69	1,063	4.5%	460	4.0%	603	5.0%
70 - 74	774	3.3%	358	3.1%	416	3.4%
75 - 79	364	1.6%	166	1.5%	198	1.6%
80 - 84	161	0.7%	60	0.5%	101	0.8%
85+	156	0.7%	44	0.4%	112	0.9%
Median Age	35.1		33.7		36.1	

2027 Asian Population by Age

	Total		Males		Females	
	Number	Percent	Number	Percent	Number	Percent
Total	23,861	100.0%	11,568	100.0%	12,293	100.0%
0 - 4	1,346	5.6%	714	6.2%	632	5.1%
5 - 9	1,621	6.8%	847	7.3%	774	6.3%
10 - 14	1,524	6.4%	790	6.8%	734	6.0%
15 - 19	1,457	6.1%	702	6.1%	755	6.1%
20 - 24	1,714	7.2%	913	7.9%	800	6.5%
25 - 29	1,869	7.8%	903	7.8%	966	7.9%
30 - 34	2,056	8.6%	1,010	8.7%	1,046	8.5%
35 - 39	2,432	10.2%	1,167	10.1%	1,265	10.3%
40 - 44	2,130	8.9%	1,006	8.7%	1,124	9.1%
45 - 49	1,430	6.0%	714	6.2%	716	5.8%
50 - 54	1,159	4.9%	547	4.7%	612	5.0%
55 - 59	1,120	4.7%	518	4.5%	602	4.9%
60 - 64	1,157	4.8%	512	4.4%	645	5.2%
65 - 69	1,116	4.7%	481	4.2%	635	5.2%
70 - 74	891	3.7%	404	3.5%	487	4.0%
75 - 79	469	2.0%	216	1.9%	253	2.1%
80 - 84	195	0.8%	73	0.6%	122	1.0%
85+	176	0.7%	50	0.4%	126	1.0%
Median Age	35.7		34.5		36.7	

Source: Esri forecasts for 2022 and 2027. U.S. Census Bureau 2010 decennial Census data converted by Esri into 2020 geography.

2022 Pacific Islander Population by Age

	Total		Males		Females	
	Number	Percent	Number	Percent	Number	Percent
Total	594	100.0%	275	100.0%	319	100.0%
0 - 4	32	5.4%	15	5.5%	17	5.3%
5 - 9	26	4.4%	18	6.5%	8	2.5%
10 - 14	38	6.4%	16	5.8%	22	6.9%
15 - 19	37	6.2%	23	8.4%	14	4.4%
20 - 24	40	6.7%	17	6.2%	23	7.2%
25 - 29	57	9.6%	28	10.2%	29	9.1%
30 - 34	54	9.1%	24	8.7%	30	9.4%
35 - 39	53	8.9%	26	9.5%	27	8.5%
40 - 44	37	6.2%	18	6.5%	19	6.0%
45 - 49	25	4.2%	16	5.8%	9	2.8%
50 - 54	25	4.2%	12	4.4%	13	4.1%
55 - 59	28	4.7%	8	2.9%	20	6.3%
60 - 64	36	6.1%	16	5.8%	20	6.3%
65 - 69	39	6.6%	14	5.1%	25	7.8%
70 - 74	29	4.9%	11	4.0%	18	5.6%
75 - 79	13	2.2%	5	1.8%	8	2.5%
80 - 84	19	3.2%	6	2.2%	13	4.1%
85+	6	1.0%	2	0.7%	4	1.3%
Median Age	36.2		34.3		38.1	

2027 Pacific Islander Population by Age

	Total		Males		Females	
	Number	Percent	Number	Percent	Number	Percent
Total	611	100.0%	280	100.0%	331	100.0%
0 - 4	20	3.3%	9	3.2%	11	3.3%
5 - 9	29	4.7%	16	5.7%	13	3.9%
10 - 14	38	6.2%	20	7.1%	18	5.4%
15 - 19	33	5.4%	18	6.4%	15	4.5%
20 - 24	52	8.5%	25	8.9%	27	8.2%
25 - 29	34	5.6%	14	5.0%	20	6.0%
30 - 34	54	8.8%	30	10.7%	24	7.3%
35 - 39	59	9.7%	23	8.2%	36	10.9%
40 - 44	54	8.8%	26	9.3%	28	8.5%
45 - 49	31	5.1%	18	6.4%	13	3.9%
50 - 54	22	3.6%	12	4.3%	10	3.0%
55 - 59	25	4.1%	9	3.2%	16	4.8%
60 - 64	30	4.9%	10	3.6%	20	6.0%
65 - 69	39	6.4%	17	6.1%	22	6.6%
70 - 74	40	6.5%	14	5.0%	26	7.9%
75 - 79	25	4.1%	10	3.6%	15	4.5%
80 - 84	13	2.1%	4	1.4%	9	2.7%
85+	13	2.1%	5	1.8%	8	2.4%
Median Age	38.9		36.7		40.3	

Source: Esri forecasts for 2022 and 2027. U.S. Census Bureau 2010 decennial Census data converted by Esri into 2020 geography.

Age by Sex by Race Profile

WAMPO Region
 Area: 1,053.11 square miles

Prepared by Esri

2022 Some Other Race Population by Age

	Total		Males		Females	
	Number	Percent	Number	Percent	Number	Percent
Total	33,244	100.0%	17,293	100.0%	15,949	100.0%
0 - 4	3,245	9.8%	1,621	9.4%	1,623	10.2%
5 - 9	3,148	9.5%	1,602	9.3%	1,545	9.7%
10 - 14	3,017	9.1%	1,521	8.8%	1,496	9.4%
15 - 19	2,735	8.2%	1,437	8.3%	1,298	8.1%
20 - 24	2,876	8.7%	1,487	8.6%	1,389	8.7%
25 - 29	2,906	8.7%	1,580	9.1%	1,326	8.3%
30 - 34	3,175	9.6%	1,727	10.0%	1,447	9.1%
35 - 39	2,992	9.0%	1,541	8.9%	1,451	9.1%
40 - 44	2,305	6.9%	1,203	7.0%	1,102	6.9%
45 - 49	1,671	5.0%	887	5.1%	784	4.9%
50 - 54	1,367	4.1%	715	4.1%	653	4.1%
55 - 59	1,009	3.0%	539	3.1%	470	2.9%
60 - 64	868	2.6%	476	2.8%	392	2.5%
65 - 69	743	2.2%	394	2.3%	349	2.2%
70 - 74	515	1.5%	270	1.6%	245	1.5%
75 - 79	311	0.9%	146	0.8%	165	1.0%
80 - 84	181	0.5%	72	0.4%	109	0.7%
85+	180	0.5%	75	0.4%	105	0.7%
Median Age	27.8		28.1		27.4	

2027 Some Other Race Population by Age

	Total		Males		Females	
	Number	Percent	Number	Percent	Number	Percent
Total	34,841	100.0%	18,108	100.0%	16,734	100.0%
0 - 4	3,369	9.7%	1,686	9.3%	1,682	10.1%
5 - 9	3,225	9.3%	1,641	9.1%	1,583	9.5%
10 - 14	3,106	8.9%	1,564	8.6%	1,542	9.2%
15 - 19	2,898	8.3%	1,500	8.3%	1,398	8.4%
20 - 24	3,065	8.8%	1,579	8.7%	1,486	8.9%
25 - 29	2,949	8.5%	1,607	8.9%	1,342	8.0%
30 - 34	3,088	8.9%	1,691	9.3%	1,397	8.3%
35 - 39	3,077	8.8%	1,618	8.9%	1,459	8.7%
40 - 44	2,641	7.6%	1,352	7.5%	1,289	7.7%
45 - 49	1,935	5.6%	1,013	5.6%	922	5.5%
50 - 54	1,393	4.0%	737	4.1%	657	3.9%
55 - 59	968	2.8%	518	2.9%	450	2.7%
60 - 64	856	2.5%	467	2.6%	389	2.3%
65 - 69	834	2.4%	449	2.5%	385	2.3%
70 - 74	603	1.7%	316	1.7%	287	1.7%
75 - 79	380	1.1%	185	1.0%	195	1.2%
80 - 84	249	0.7%	103	0.6%	146	0.9%
85+	206	0.6%	82	0.5%	124	0.7%
Median Age	28.0		28.4		27.5	

Source: Esri forecasts for 2022 and 2027. U.S. Census Bureau 2010 decennial Census data converted by Esri into 2020 geography.

Age by Sex by Race Profile

WAMPO Region
 Area: 1,053.11 square miles

Prepared by Esri

2022 Multiple Races Population by Age

	Total		Males		Females	
	Number	Percent	Number	Percent	Number	Percent
Total	61,793	100.0%	30,186	100.0%	31,605	100.0%
0 - 4	9,848	15.9%	4,840	16.0%	5,008	15.8%
5 - 9	9,022	14.6%	4,381	14.5%	4,641	14.7%
10 - 14	8,281	13.4%	4,115	13.6%	4,166	13.2%
15 - 19	5,901	9.5%	2,855	9.5%	3,046	9.6%
20 - 24	4,020	6.5%	2,002	6.6%	2,018	6.4%
25 - 29	3,982	6.4%	1,958	6.5%	2,023	6.4%
30 - 34	3,541	5.7%	1,634	5.4%	1,907	6.0%
35 - 39	3,295	5.3%	1,597	5.3%	1,698	5.4%
40 - 44	2,558	4.1%	1,215	4.0%	1,342	4.2%
45 - 49	1,839	3.0%	916	3.0%	924	2.9%
50 - 54	1,790	2.9%	869	2.9%	921	2.9%
55 - 59	1,692	2.7%	878	2.9%	813	2.6%
60 - 64	1,583	2.6%	790	2.6%	793	2.5%
65 - 69	1,456	2.4%	705	2.3%	752	2.4%
70 - 74	1,140	1.8%	526	1.7%	614	1.9%
75 - 79	794	1.3%	409	1.4%	385	1.2%
80 - 84	505	0.8%	242	0.8%	263	0.8%
85+	546	0.9%	254	0.8%	291	0.9%
Median Age	18.2		18.1		18.3	

2027 Multiple Races Population by Age

	Total		Males		Females	
	Number	Percent	Number	Percent	Number	Percent
Total	68,085	100.0%	33,248	100.0%	34,837	100.0%
0 - 4	10,803	15.9%	5,331	16.0%	5,472	15.7%
5 - 9	9,755	14.3%	4,719	14.2%	5,036	14.5%
10 - 14	9,155	13.4%	4,593	13.8%	4,562	13.1%
15 - 19	6,551	9.6%	3,189	9.6%	3,362	9.7%
20 - 24	4,403	6.5%	2,156	6.5%	2,247	6.5%
25 - 29	4,057	6.0%	2,001	6.0%	2,056	5.9%
30 - 34	3,870	5.7%	1,806	5.4%	2,064	5.9%
35 - 39	3,544	5.2%	1,712	5.1%	1,832	5.3%
40 - 44	3,090	4.5%	1,444	4.3%	1,647	4.7%
45 - 49	2,175	3.2%	1,086	3.3%	1,089	3.1%
50 - 54	1,884	2.8%	903	2.7%	980	2.8%
55 - 59	1,657	2.4%	860	2.6%	798	2.3%
60 - 64	1,574	2.3%	802	2.4%	772	2.2%
65 - 69	1,702	2.5%	825	2.5%	877	2.5%
70 - 74	1,433	2.1%	643	1.9%	790	2.3%
75 - 79	1,113	1.6%	558	1.7%	554	1.6%
80 - 84	684	1.0%	330	1.0%	354	1.0%
85+	637	0.9%	292	0.9%	344	1.0%
Median Age	18.3		18.1		18.5	

Data Note: Multiple Races population includes unique counts of the population who reported at least two races.

Source: Esri forecasts for 2022 and 2027. U.S. Census Bureau 2010 decennial Census data converted by Esri into 2020 geography.